

# C900 Series

# OKI®



## Multimedia Production Platform Devices

C941dn  
C931dn  
C911dn



# C900 Series

**Breathtaking  
color.**

**Stunning  
detail.**

**Production  
speed.**

**The C900 Series from OKI:** three versatile, easy-to-use, graphics-oriented print devices, designed and priced for in-house applications, and built on a true multimedia production platform:

- **Multimedia:** When it comes to variety, size and thickness of media, the C900 Series greatly extends the OKI heritage of media support. All three models easily handle 360gsm extra-thick card stock, 14-point polyester, magnetic media, transparency films and much more—in sizes ranging from 3" x 5" index cards to 13" x 52" banners.
- **Production:** C900 Series devices have affordable digital short-run capabilities. Produce striking comps, one-offs and reprints at up to 50 ppm<sup>1</sup>. And the C941dn has the added flexibility of being able to apply white text and graphics to dark media, and to place clear toner selectively on a design, with eye-catching results.
- **Platform:** These devices represent a new design driven by an aggressive goal—to create rugged, affordable and flexible printers aligned with the direction of today's print production marketplace. They feature short-run capacities and fast print speed, and deliver stunning output across the widest range of media. Add the optional EFI® Fiery® XF Server to the C931dn or C941dn and get formidable, professional devices with enhanced color management and simplified workflows.

## C900 Series Highlights:

Print speeds up to 50 ppm in Color and Mono<sup>1</sup>

True 1200 x 1200 dpi resolution

High-capacity consumables: up to 38,000 pages<sup>3</sup>

Handles stock up to 360gsm, 3" x 5" cards to 52" banners

Paper capacity expandable to 2,950 sheets

Supports tabloid extra (12" x 18") and Super-B (13" x 19")

1 Gigabit network and duplex (2-sided printing) standard

Easy front access to toner cartridges and image drums

High-resolution color LCD display panel

Low total cost of ownership (TCO)

Optional external Fiery XF 5 server<sup>3</sup>

Toll-free technical assistance 24/7/365<sup>5</sup>



C911dn



C931dn

# Including the industry's only 5-color LED device.

## Benefits and advantages for every user.

The C900 Series lets you extend your in-house printing and presentation capabilities from the expected to the extraordinary. These affordable printing devices, with their ease of use and low total cost of ownership, enable you to produce stunning documents, offer new services, be competitive, and grow your business.

**C911dn** – for efficiency-minded, budget-conscious office users and departments with a need for excellent color—such as Marketing and Corporate Communications—this is the ideal printer. Stunning results at breathtaking speed. Simple operation, with auto duplex and network standard. Plus all the media flexibility offered across the C900 Series platform.

**C931dn** – taking it up a notch for the Advertising, Graphic Arts and Design department, company or school—with their greater sensitivity to color—this device is perfect. With the optional Fiery XF 5 Server, creative- and production-oriented users alike will love the color consistency and accuracy required for their projects and short-run print jobs. And keepers of the budget will be thrilled with even lower costs per page, especially at higher volumes.

**C941dn** – all of the above, plus the extraordinary capability of applying white or clear gloss toner in addition to CMYK. Here is the cutting-edge, multimedia production platform that creative, opportunity-seeking Design Firms, Specialty Print Shops, even large Retailers have been dreaming of: a fast, flexible, affordable, easy-to-use 5-station device.



# CMYK+

Extraordinary results that transcend expectations.



Now you can demonstrate your creativity or broaden your printed offerings by producing materials on an incredible range of media in 4-color *plus* solid White or Clear gloss toners.

These processes—which used to require expensive printing equipment and outside resources—are available *in-house and on demand* with the C941dn, a unique 5-station multimedia production platform device from OKI®.

The C941dn gives users the ability to create extraordinary mock-ups, stationery, invitations, brochures, packaging prototypes, point-of-sale material, watermarks, window graphics, labels, etc., in breathtaking HD Color that now includes White or Clear spot color!

## Apply White toner first or last

Use white text and graphics on dark-colored media. Make 4-color images on dark media stand out by laying down White toner first and printing CMYK on top—the same technique used for producing vibrant 4-color images on translucent media or transparency film.

## Two minutes from White to Clear

That's all it takes to switch the 5th station of the C941dn from White toner to Clear Gloss toner—and back again. Each color kit comes with all you need to get spectacular effects on opaque, translucent or transparent media with no fuss. And the front-accessible compartment makes exchanging or replacing consumables even easier.



# Go beyond 4-Color with White or Clear Toner

## Examples of the C941dn's unique capabilities:



**Pocket Folders** – Spot White and Clear toner give powerful emphasis to text and graphics; handles heavy stock (up to 360gsm)



**Bottle Labels** – White toner under CMYK on transparent film makes colors pop!



**Table Tents** – Spot Clear toner makes color even more vibrant on industry-standard substrates



**Invitations** – Print text and graphics with White toner on dark media for a striking, elegant look



**Retail Signage** – HD Color imagery is a knock-out (even on 14-point polyester) – even more so with flood Clear toner

**Magnetic Media Signs** – Flood-coat with Clear toner for a dazzling finish – or highlight details with spot Clear



**2-Sided Business Cards** – Using spot Clear toner over CMYK is a brilliant effect; White toner on dark-colored media really draws the eye



**Envelopes** – Print on matte media, with spot Clear toner



**Banners** – HD Color on sheets up to 13" x 52" and 360gsm is attention-grabbing – adding spot Clear to call out details even more so!

## Industry-leading color quality – starting with HD Color technology, available only from OKI®

### HD Color Printing technology



High definition color is the standard for the C900 Series. HD Color renders deeper, more saturated colors,

finer detail and more precise toner placement than ordinary color printers. This unique four-part process includes:

**Multilevel LED printheads** that control the amount of toner applied to each 1200-dpi dot, preserving fine image detail and maximizing color fidelity.

**Microfine toner** engineered to ensure that printed documents are sharp and crisp, with a high-quality finish.

**Single Pass Color™ technology** enhanced to improve color registration, regardless of paper type and weight, and provides better toner transfer across a wider range of media types.

**Printer control system** automatically adjusts for sharp, clear images every time; color checking and matching deliver professional photo-like quality.

### EFI® Fiery® XF 5 Server

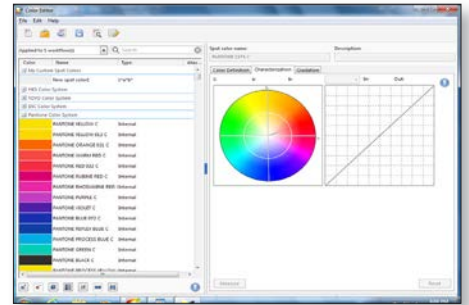
The C931dn and C941dn are ideal for professionals with an eye for accurate color output. Equipped with the optional external EFI Fiery XF 5 server, these models can take advantage of fast, precise color reproduction, while also making it easy to submit print jobs with consistent results.



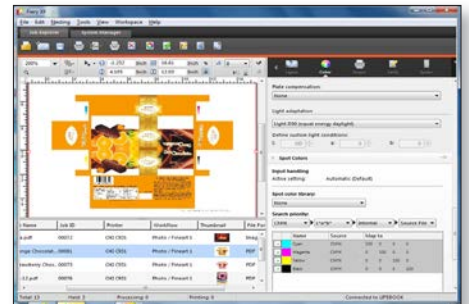
XF Version 5 is a flexible and scalable high-speed RIP with color management software that streamlines production, from job creation to printing and verification, through customizable automated workflows.

It comes pre-loaded with industry leading EFI applications and the C900 Series Printer Option, which enables users to:

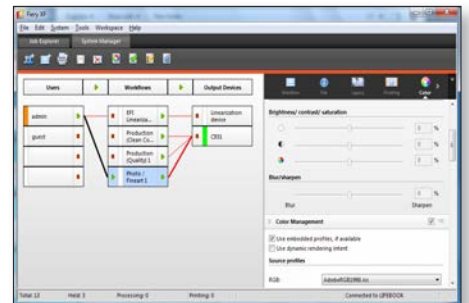
- Achieve consistent color, page to page and job to job
  - Get stunning, precise and predictable quality prints
  - Advanced spot- and process-color optimization
  - Support for PANTONE® as well as a variety of spot color libraries
- Automate workflows
  - Fully customizable user interface allows applications to be tailored to each operator's tasks and skill set
  - Eliminate touch points and remove the need for manual job submission
  - Reduce error rates



**Spot color tools** – get accurate spot colors (such as logos and corporate identity colors) every time, quickly and easily. Select from PANTONE, HKS, Toyo and DIC spot color libraries.



**Job management views** – for intuitive control and verification of relevant job parameters. Expand job control and reduce print waste with options for creating cutting paths, managing bleeds, and optimizing layouts on sheets.



**Automated color workflows** – save valuable time and reduce operator errors by minimizing manual tuning. Set-up is a breeze, with pre-installed workflows and the availability of downloadable media profiles.

# The C900 Series from OKI®: a family of multimedia production platform devices

## The C900 Series at a Glance...



Front-accessible consumables make changing or replacing toner cartridges and image drums easy and quick

Standard paper capacity is 830 sheets (530-sheet tray and 300-sheet MPT)



Optional 530-sheet 2nd paper tray increases paper capacity to 1,360 sheets

Optional 2nd tray and high-capacity feeder (with casters) increase paper capacity to max. 2,950 sheets



Optional 2nd and 3rd paper trays (with casters) increase paper capacity to 1,890 sheets

Color LCD display shows current status of the printer; built-in toner gauge indicates the remaining life of each toner cartridge



# C900 Series

## Specifications

Model		C941dn	C931dn	C911dn
Performance		5-Color Digital LED		4-Color Digital LED
Print Speed <sup>1</sup>	CMYK/Mono	Up to 50ppm Letter, 27ppm Tabloid		
	CMYK + White	Up to 45 ppm Letter, 24 ppm Tabloid	N/A	
	CMYK + Clear	Up to 18 ppm Letter	N/A	
Time to First Page <sup>1</sup>		Approx. 8 seconds		
Duty Cycle		300,000 pages		
Print Quality	Resolution	Up to 1200 x 1200 dpi; ProQ 1200 x 600 x 16 levels		
Memory	RAM (Standard/Max)	2 GB		
	Processor	1.2 GHz ARM CPU		1 GHz ARM CPU
Compatibility	Printer Languages	Adobe® PostScript® 3™, PCL™ 6, PCL 5c, XPS™		
	Connectivity	High-speed USB 2.0, 10 Base-T/100 Base-TX/1000 Base-T Ethernet		
	Operating Systems	Windows® 8, Windows 7, Windows Vista™, Windows XP, Windows Server 2012, Windows Server 2008, Windows Server 2008 R2, Windows Server 2003; Mac OS 10.3.9 – 10.9		
	Network Protocols	TCP/IP, EtherTalk		
Color Features/ Solutions		EFI® Fiery® XF 5.0 Server (optional external PC-based server)	N/A	
		Trapping; Embedded ICC Profile-based workflow; Simulations for SWOP, ISO Coated, Japan Color; PDF Direct Print; PS Gamma Adjust; Color Correct		
Print Management		Print Job Accounting; PrintSuperVision 4.0		
Media Handling	Media Sizes	Tabloid extra (12" x 18"), tabloid (11" x 17"), legal, letter, executive, 3" x 5" index cards, A3, A4, A5, A6, B5, C5, DL, Com 10, Monarch envelopes, and banners (up to 13" by 52")		
	Media Weight	Trays 1/2/3 and High-Capacity Feeder: 52–320gsm; Multi-purpose Tray: 52–360gsm		
Media Capacity	Multi-purpose Tray (MPT)	Up to 300 sheets		
	Trays 1/2/3	Up to 530 sheets		
	High-Capacity Feeder	Up to 1,590 sheets		
Max Capacity		Up to 2,950 sheets (w/ MPT, 2 Trays and High-Capacity Tray)		
Media Output		Face Down: max 610 sheets; Face Up: max 300 sheets		
Environmental	Size (WxDxH)	27.5" x 24.6" x 25.2" (699 mm x 625 mm x 640 mm)		
	Weight	244.4 lbs (110.8 kg) including consumables	215.2 lbs (97.6 kg) including consumables	
	Temperature/Humidity	50° – 90°F (10° – 32°C) / 20% – 80%RH		
	Power Consumption	Active: 1600W max. /1100W avg.; Standby: avg. 40W; PowerSave mode: 30W or less; Sleep mode: 4W or less; Auto Shutoff: 0.4W or less		
	Noise Levels	Active: 57dBA or less; Standby: 34dBA or less; PowerSave mode: Inaudible		
Options	Accessory (Part Number)	530-Sheet 2nd/3rd Tray (45530702); High-Capacity Feeder w/ caster base (45530802); 530-Sheet Tray w/ Caster Base (45530902); EFI® Fiery® XF 5.0 PC-based Server (45592302) <sup>2</sup> ; 160 GB Hard Disk Drive (44622302)		
Warranty	Limited	C911dn/C931dn: 1-Year On-Site <sup>4</sup> ; C941dn: 90-Day On-Site <sup>4</sup> ; All models: 5-Year Digital LED Printheads		
Product	Description	Part Numbers		
C911dn	4-Station Digital LED Printer	62439901 (120V)		
C931dn	4-Station Digital LED Printer	62440001 (120V)		
C941dn	5-Station Digital LED Printer	62441501 (120V)		
Spot Color Kits (C941dn only)	White Spot Color Kit Clear Spot Color Kit	45531302 45531402	NOTE: Either a White or Clear Kit must be purchased along with C941dn model. Required for operation.	
Toner Cartridges	C931dn/C941dn (38,000 pages <sup>2</sup> ) C911dn (24,000 pages <sup>2</sup> ) C941dn (10,000 pages <sup>5</sup> ) C941dn (20,000 pages <sup>5</sup> )	Cyan – 45536515; Magenta – 45536514; Yellow – 45536513; Black – 45536516 Cyan – 45536423; Magenta – 45536422; Yellow – 45536421; Black – 45536424 White – 45536405 Clear – 45536406		
Image Drums	40,000 pages <sup>7</sup> C941dn (20,000 pages <sup>6</sup> )	Cyan – 45103727; Magenta – 45103726; Yellow – 45103725; Black – 45103728 White – 45103729; Clear – 45103730		
Waste Toner Box	Approx. 40,000 pages <sup>6</sup>	45531502		
Fuser	Approx. 150,000 pages	45531112 (120V)		
Transfer Belt	Approx. 150,000 pages	45531212		

<sup>1</sup> Published performance results based on laboratory testing of letter-size sheets, simplex. Individual results may vary.

<sup>2</sup> Based on ISO/IEC 19798.

<sup>3</sup> Available for C931dn and C941dn models only.

<sup>4</sup> Available in the U.S. and Canada only.

<sup>5</sup> Based on 5% coverage of letter-size sheet, simplex.

<sup>6</sup> Based on 3 pages per job.

Specifications are subject to change without notice.

Featured products may not be available in all countries. Please contact your local office for regional availability.

© 2013 Oki Data Americas, Inc. OKI Reg. T.M., M.D., Oki Electric Industry Co., Ltd. 5+ Color logo T.M., Oki Data Americas, Inc. Single Pass Color T.M., Oki Data Corp. PANTONE Reg. T.M., Pantone Inc. EFI, Fiery Reg. T.M., EFI Corp. Adobe, PostScript Reg. T.M., PostScript 3 T.M., Adobe Systems, Inc. PCL Reg. T.M., Hewlett-Packard Co. Windows, Windows Vista Reg. T.M., Microsoft Corp. Mac Reg. T.M., Apple Inc. ENERGY STAR Reg. T.M., US EPA.

Mid-State Litho, Inc.

USA  
5459 Fenton Rd.  
Flint, MI 48507  
TEL: 800.343.4231  
Local: 810.238.7370



www.midstatelitho.net

**OKI®**  
Open up your dreams